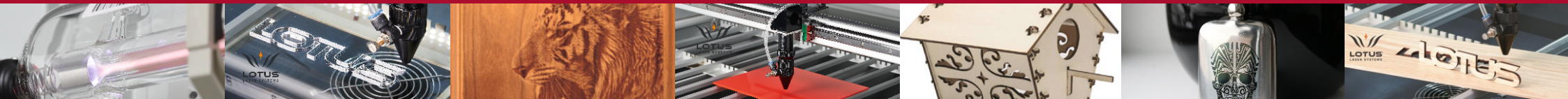




# Lotus *Blu* Laser Systems





## Standard Features

### UK DESIGNED & MANUFACTURED

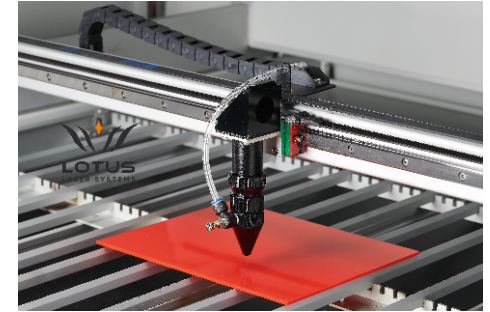
Most competing machines of this type and at this price point will be direct Chinese imports. All Lotus Laser Systems are designed, assembled and tested in the UK to ISO9001 quality standards. We design our own electronics and manufacture all of our wiring in house to ensure that our systems are built to the highest quality and can be relied upon to deliver years of trouble free service

### EXCELLENT CAD/CAM SOFTWARE

All Blu model laser cutters come with easy to use, feature enriched Lotus Cut CAD/CAM software. Unlike the alternative print driver type machines, using our software provides far greater compatibility with common industry artwork formats, extra functionality to alter drawings at the laser cutting machine without having to open an expensive graphics package and, best of all, powerful optimisation tools to minimise process times, reduce errors and enhance output quality

### AIR ASSISTED NOSECONE ▶

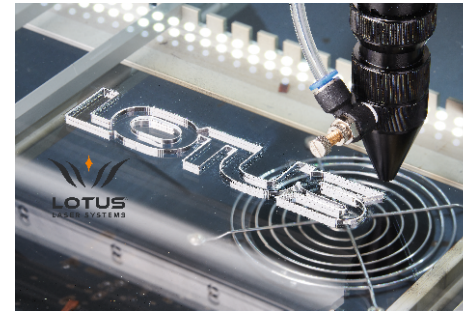
When users switch from other brands to ours one of the main comments made is that the lens in a Blu laser cutter requires far less frequency of cleaning and lasts a much longer time. This is primarily because of the extra large bore air assist tube that we use combined with a different sized nosecone for each of the lens options we provide. As a result, Blu lasers deliver far higher rates of air flow through the nosecone not only protecting the lens but in many cases, in combination with underside extraction our air assist also enhances the cut quality



### ▲ UK GRADED DC LASER SOURCE

Some DC lasers have a reputation of being very unreliable, even when new. At Lotus Laser Systems we carefully select the suppliers and the technology that we use for DC lasers then in the UK we test all of the lasers that we receive before they are integrated, literally scrapping any that do not meet our high quality

standards. As a consequence this adds some time and cost to our process, however, we feel that this grading process is the main reason why DC lasers fitted to a Lotus Laser System often outperform and far outlast DC lasers from alternative providers.

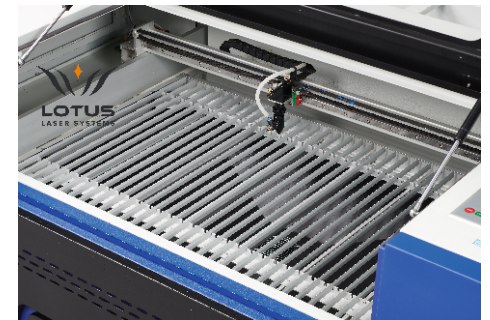


### ◀ UNDERSIDE EXTRACTION

To maximise edge quality and speed of cutting, for most applications fumes should be extracted through the cut line from underneath the material. All Blu model laser cutters come with an underside extraction table designed to deliver a well balanced degree of vacuum and air flow. This underside extraction table can also be used to hold flat thin materials that might otherwise warp. Drawing fumes from underneath the material significantly reduces system maintenance, increasing component life while at the same time minimising the risk of flaming.

### LAMELLA BAR CUTTING TABLE ▶

All Blu model laser cutters are manufactured with a lamella bar cutting table. Cutting rigid sheet materials on lamella bars is far superior to using a honeycomb table. The lamellas can hold a far heavier weight, do not suffer distortion or cause as much flash back as a honeycomb table does; they can be removed, cleaned and very cheaply replaced if necessary.



# Blu60

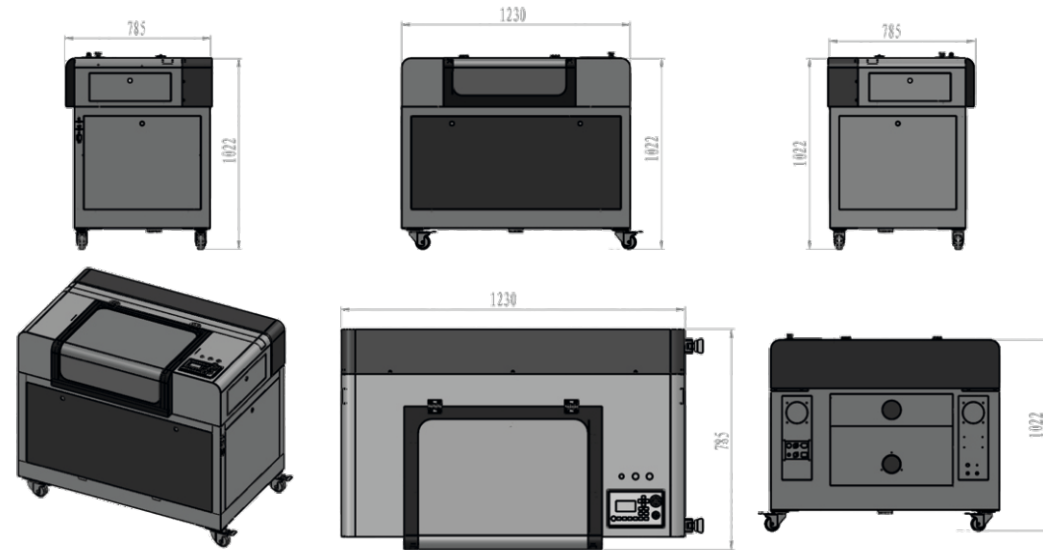
Laser cutting and engraving system



Technology this good has never been so affordable



## General Technical Data



<b>WORKING AREA</b>	
600 x 400mm	
<b>NET WEIGHT &amp; DIMENSIONS</b>	
Width	1230mm
Depth	785mm
Height	1050mm
Weight	240kg approx
<b>GROSS (CRATED) WEIGHT &amp; DIMENSIONS</b>	
Width	1750mm
Depth	930mm
Height	1280mm
Weight	335kg approx
<b>COOLING UNIT</b>	
Gross: 420mm W x 690mm D x 570mm H @ 25kg	
Net: 280mm W x 580mm D x 430mm H @ 20kg	
<b>LASER SOURCE</b>	
DC excited, water-cooled, minimum 30w output @ 10.6µm	
Positioning (red dot) pointer 655mm	
<b>POWER REQUIREMENT</b>	
All systems single phase 230v 50/60Hz	
<b>COMPUTER</b>	
Operating System	Windows
Connection	USB max 3m
<b>EXHAUST REQUIREMENTS</b>	
It is mandatory to operate a correctly configured exhaust	
Performance variable according to application - seek our advice	
Number of exhaust ports: 2	Port OD Diameter: 100mm
<b>PERFORMANCE</b>	
Scanning mode: 1000mm/sec	Vector mode: 50mm/sec
<b>SAFETY &amp; SECURITY</b>	
Laser class 2 interlocked	CE
Emergency stop	RoHS
Keyswitch power on/off	

<b>MISCELLANEOUS</b>	
LED cabinet lights	Buffer with 99 file capacity
Controller with LCD display	PC Connections by 3m USB cable
Direct connection by USB stick	Coaxial air assist
Cutting nosecone (1 per lens)	Air assist pump
<b>TABLE CONFIGURATION</b>	
40x lamella bar cutting table	Lamellas at 15mm centres
Z axis max travel 100mm	Centralised underside exhaust
<b>MAXIMUM PART LOAD</b>	
X 600mm	Y 400mm
Z 1.5" lens 165mm	Weight 12kg
Z 2.0" lens 140mm	Z 4.0" lens 90mm
Z 2.5" lens 125mm	
<b>ENVIRONMENTAL REQUIREMENTS</b>	
Ambient temp. within 15-30c	300mm min clearance at sides
Do not store above or box in	Rest on floor level within 3mm
Ventilate the room well	Comply with local regulations
Do not power by a generator	Direct data cable connection
Keep away from: vibration, high humidity, dampness, unstable power supply, direct sunlight, equipment making dust particles, drafts corrosive substances, combustible substances etc.	
<b>WARRANTY (T&amp;C APPLY)</b>	
Main system: 2 years	Labour: Variable by territory
Laser source: 1 year	Optics: 3 months
Warranty upgradable to 5 years at extra cost	
Service contracts available at extra cost	





# Blu70

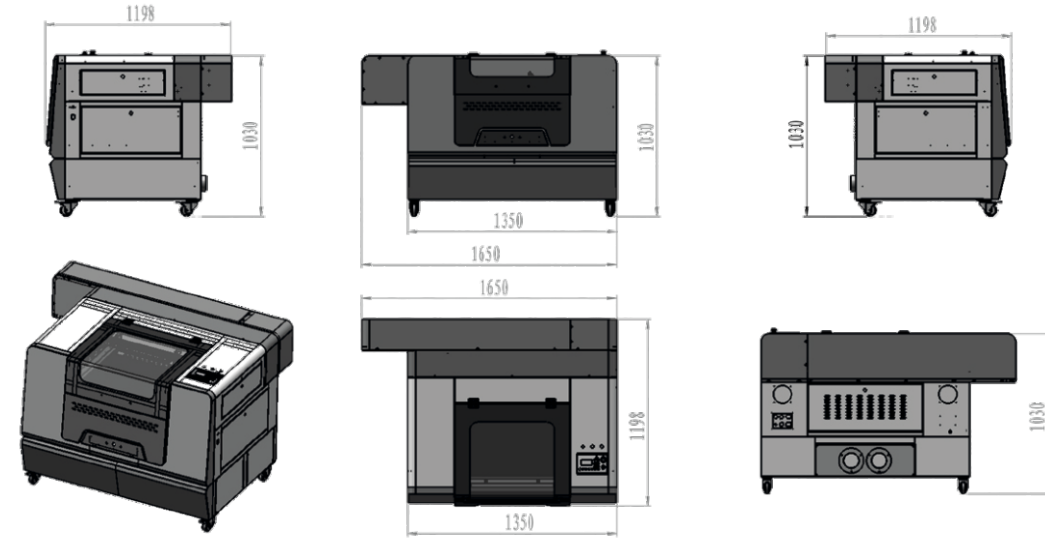
Laser cutting and engraving system



Technology this good has never been so affordable



## General Technical Data



### WORKING AREA

700 x 500mm

### NET WEIGHT & DIMENSIONS

Width	1350mm
Depth	1200mm
Height	1050mm
Weight	248kg approx

### GROSS (CRATED) WEIGHT & DIMENSIONS

Width	1810mm
Depth	1440mm
Height	1350mm
Weight	350kg approx

### COOLING UNIT

Gross: 420mm W x 690mm D x 570mm H @ 25kg  
 Net: 280mm W x 580mm D x 430mm H @ 20kg

### LASER SOURCE

DC excited, water-cooled, minimum 60w output @ 10.6µm  
 Positioning (red dot) pointer 655mm

### POWER REQUIREMENT

All systems single phase 230v 50/60Hz

### COMPUTER

Operating System Windows  
 Connection USB max 3m

### EXHAUST REQUIREMENTS

It is mandatory to operate a correctly configured exhaust  
 Performance variable according to application - seek our advice  
 Number of exhaust ports: 2 Port OD Diameter: 100mm

### PERFORMANCE

Scanning mode: 1000mm/sec Vector mode: 50mm/sec

### SAFETY & SECURITY

Laser class 2 interlocked CE  
 Emergency stop RoHS

Keyswitch power on/off

### MISCELLANEOUS

LED cabinet lights	Buffer with 99 file capacity
Controller with LCD display	PC Connections by 3m USB cable
Direct connection by USB stick	Coaxial air assist
Cutting nosecone (1 per lens)	Air assist pump

### TABLE CONFIGURATION

48x lamella bar cutting table	Lamellas at 15mm centres
Z axis max travel 100mm	Centralised underside exhaust

### MAXIMUM PART LOAD

X 700mm	Y 500mm
Z 1.5" lens 165mm	Weight 12kg
Z 2.0" lens 140mm	Z 4.0" lens 90mm
Z 2.5" lens 125mm	

### ENVIRONMENTAL REQUIREMENTS

Ambient temp. within 15-30c	300mm min clearance at sides
Do not store above or box in	Rest on floor level within 3mm
Ventilate the room well	Comply with local regulations
Do not power by a generator	Direct data cable connection

### WARRANTY (T&C APPLY)

Main system: 2 years	Labour: Variable by territory
Laser source: 1 year	Optics: 3 months
Warranty upgradable to 5 years at extra cost	
Service contracts available at extra cost	



# Blu100

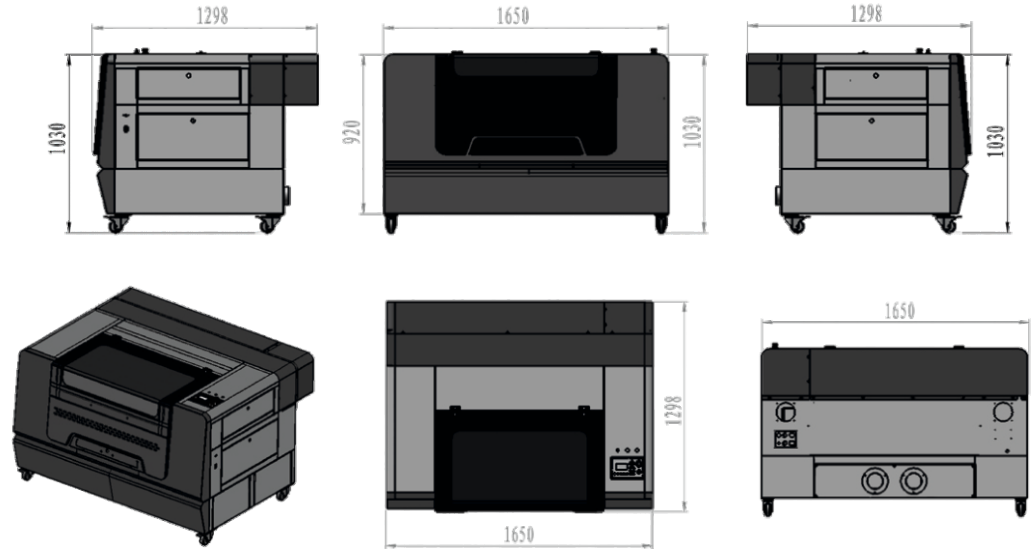
Laser cutting and engraving system



Technology this good has never been so affordable



## General Technical Data



### WORKING AREA

1000 x 600mm

### NET WEIGHT & DIMENSIONS

Width	1650mm
Depth	1300mm
Height	1050mm
Weight	292kg approx

### GROSS (CRATED) WEIGHT & DIMENSIONS

Width	1880mm
Depth	1630mm
Height	1350mm
Weight	440kg approx

### COOLING UNIT

Gross: 420mm W x 690mm D x 570mm H @ 25kg  
 Net: 280mm W x 580mm D x 430mm H @ 20kg

### LASER SOURCE

DC excited, water-cooled, minimum 80w output @ 10.6µm  
 Positioning (red dot) pointer 655mm

### POWER REQUIREMENT

All systems single phase 230v 50/60Hz

### COMPUTER

Operating System Windows  
 Connection USB max 3m

### EXHAUST REQUIREMENTS

It is mandatory to operate a correctly configured exhaust  
 Performance variable according to application - seek our advice  
 Number of exhaust ports: 2 Port OD Diameter: 100mm

### PERFORMANCE

Scanning mode: 1000mm/sec Vector mode: 50mm/sec

### SAFETY & SECURITY

Laser class 2 interlocked CE  
 Emergency stop RoHS  
 Keyswitch power on/off

### MISCELLANEOUS

LED cabinet lights	Buffer with 99 file capacity
Controller with LCD display	PC Connections by 3m USB cable
Direct connection by USB stick	Coaxial air assist
Cutting nosecone (1 per lens)	Air assist pump

### TABLE CONFIGURATION

67x lamella bar cutting table	Lamellas at 15mm centres
Z axis max travel 100mm	Centralised underside exhaust

### MAXIMUM PART LOAD

X 1000mm	Y 600mm
Z 1.5" lens 165mm	Weight 20kg
Z 2.0" lens 140mm	Z 4.0" lens 90mm
Z 2.5" lens 125mm	

### ENVIRONMENTAL REQUIREMENTS

Ambient temp. within 15-30c	300mm min clearance at sides
Do not store above or box in	Rest on floor level within 3mm
Ventilate the room well	Comply with local regulations
Do not power by a generator	Direct data cable connection
Keep away from: vibration, high humidity, dampness, unstable power supply, direct sunlight, equipment making dust particles, drafts corrosive substances, combustible substances etc.	

### WARRANTY (T&C APPLY)

Main system: 2 years	Labour: Variable by territory
Laser source: 1 year	Optics: 3 months
Warranty upgradable to 5 years at extra cost	
Service contracts available at extra cost	

# Blu125

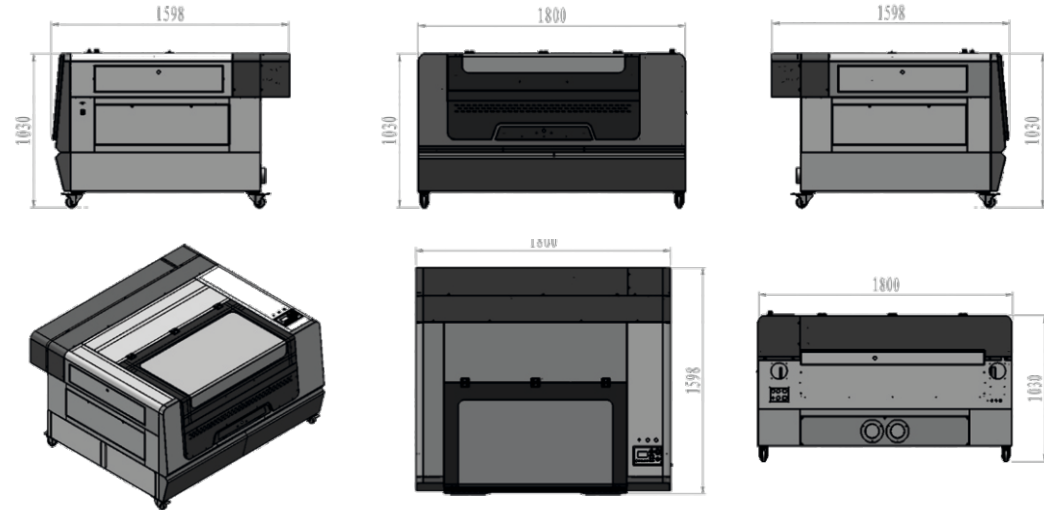
Laser cutting and engraving system



Technology this good has never been so affordable



## General Technical Data



<b>WORKING AREA</b>	
1250 x 900mm	
<b>NET WEIGHT &amp; DIMENSIONS</b>	
Width	1800mm
Depth	1600mm
Height	1050mm
Weight	325kg approx
<b>GROSS (CRATED) WEIGHT &amp; DIMENSIONS</b>	
Width	1940mm
Depth	1710mm
Height	1350mm
Weight	470kg approx
<b>COOLING UNIT</b>	
Gross: 420mm W x 690mm D x 570mm H @ 25kg	
Net: 280mm W x 580mm D x 430mm H @ 20kg	
<b>LASER SOURCE</b>	
DC excited, water-cooled, minimum 100w or 200w output @ 10.6µm	
Positioning (red dot) pointer 655mm	
<b>POWER REQUIREMENT</b>	
All systems single phase	230v 50/60Hz
<b>COMPUTER</b>	
Operating System	Windows
Connection	USB max 3m
<b>EXHAUST REQUIREMENTS</b>	
It is mandatory to operate a correctly configured exhaust	
Performance variable according to application - seek our advice	
Number of exhaust ports: 2	Port OD Diameter: 100mm
<b>PERFORMANCE</b>	
Scanning mode: 1000mm/sec	Vector mode: 50mm/sec
<b>SAFETY &amp; SECURITY</b>	
Laser class 2 interlocked	CE
Emergency stop	RoHS
Keyswitch power on/off	

<b>MISCELLANEOUS</b>	
LED cabinet lights	Buffer with 99 file capacity
Controller with LCD display	PC Connections by 3m USB cable
Direct connection by USB stick	Coaxial air assist
Cutting nosecone (1 per lens)	Air assist pump
<b>TABLE CONFIGURATION</b>	
89x lamella bar cutting table	Lamellas at 15mm centres
Z axis max travel 100mm	Centralised underside exhaust
<b>MAXIMUM PART LOAD</b>	
X 1250mm	Y 900mm
Z 1.5" lens 165mm	Weight 30kg
Z 2.0" lens 140mm	Z 4.0" lens 90mm
Z 2.5" lens 125mm	
<b>ENVIRONMENTAL REQUIREMENTS</b>	
Ambient temp. within 15-30c	300mm min clearance at sides
Do not store above or box in	Rest on floor level within 3mm
Ventilate the room well	Comply with local regulations
Do not power by a generator	Direct data cable connection
Keep away from: vibration, high humidity, dampness, unstable power supply, direct sunlight, equipment making dust particles, drafts corrosive substances, combustible substances etc.	
<b>WARRANTY (T&amp;C APPLY)</b>	
Main system: 2 years	Labour: Variable by territory
Laser source: 1 year	Optics: 3 months
Warranty upgradable to 5 years at extra cost	
Service contracts available at extra cost	

# Materials, Machines and More

In addition to Lotus lasers we also offer the industry's largest selection of laserable, rotary engraveable and printable products.

These high quality materials manufactured by global brands are available in a wide range of formats and colours. They are designed to give you creative flexibility whilst delivering required functionality to the end user.

You can download our digital catalogue at [www.csionline.co.uk](http://www.csionline.co.uk) which has almost 100 pages of materials to get inspired.







[www.csionline.co.uk](http://www.csionline.co.uk)

**CSI Manufacturing Limited**  
Unit 5 Millers Court, Windmill Road  
Kenn Business Park  
Clevedon, Bristol BS216UL

Tel: 0117 911 4367  
Email: [info@csionline.co.uk](mailto:info@csionline.co.uk)

**CSI Manufacturing Limited**  
Unit 5 Recow Interchange Estate  
Turnpike Road, Ballymount  
Dublin 22

Tel: 01 464 1488  
Email: [info@csionline.ie](mailto:info@csionline.ie)

